

DIFFUSERS

DELTA SKY AIR

Beograd, Srbija

mob: 062 24 07 07

e-mail: jovan.milivojevic@delt-air.si

Swirl diffusers with adjustable throws.



CHARACTERISTICS:

Swirl diffusers with adjustable throws

CONSTRUCTION:

RAL 9010 white painted steel, deflection blades are made of polypropylene RAL 9005 black.

UTILIZATION:

For ceiling installation and for air intake (without deflectors) and delivery.

Installation height: 2,5 - 4,1 m.

FIXING:

Fixing by using lateral screws or central screw on mounting bridge.

ACCESSORIES:

- Galvanized steel plenum, standard or insulated, with or without equalizer sheet, calibration damper and mounting bridge.
-

DVO

Swirl diffusers with adjustable throws.



CHARACTERISTICS:

Swirl diffusers with adjustable throws.

CONSTRUCTION:

RAL 9010 white painted steel, deflection blades are made of polypropylene RAL 9005 black.

UTILIZATION:

For ceiling installation and for air intake (without deflectors) and delivery.

Installation height: 2,5 - 4,1 m.

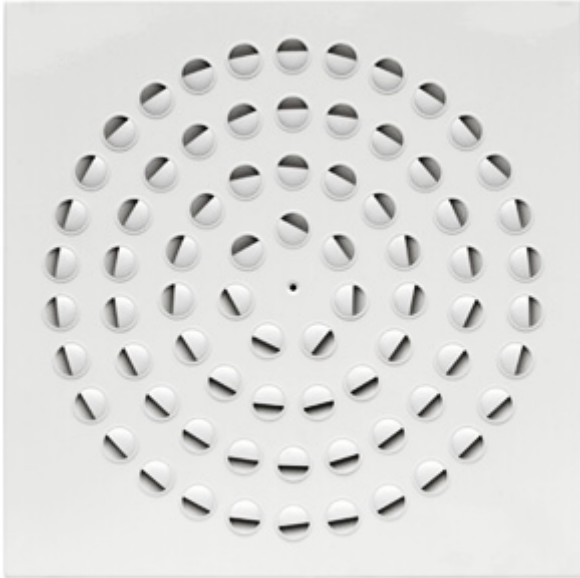
FIXING:

Fixing by using lateral screws or central screw on mounting bridge.

ACCESSORIES:

- Galvanized steel plenum, standard or insulated, with or without equalizer sheet, calibration damper and mounting bridge.
-

Diffusers with adjustable nozzles on panel.



CHARACTERISTICS:

Diffusers with adjustable nozzles on panel.

CONSTRUCTION:

RAL 9010 white painted steel, nozzles are made of ABS RAL 9010 white.

UTILIZATION:

For ceiling installation and for air delivery.

Installation height: 2,6 - 4,1 m.

FIXING:

Fixing by using lateral screws or central screw on mounting bridge.

ACCESSORIES:

- Galvanized steel plenum, standard or insulated, with or without equalizer sheet, calibration damper and mounting bridge.
-

DVE-3

Variable geometry circular diffusers.



CHARACTERISTICS:

Variable geometry circular diffusers.

CONSTRUCTION:

Bell in aluminium, fins in steel, finish painted white RAL 9010.
Diameter 630 mm with reinforced blades.

UTILIZATION:

For ceiling or wall installation and for air delivery.
Installation height: 2,5 - 20 m.

FIXING:

Fixing by screws on neck diffuser.

ACCESSORIES:

- Galvanized steel connecting plenum with insulation and calibration damper.
 - Equalizer mesh.
-

DVSE

Fixed geometry circular diffusers with helical-effect



CHARACTERISTICS:

Fixed geometry circular diffusers with helical-effect.

CONSTRUCTION:

RAL 9010 white painted steel.

UTILIZATION:

For ceiling installation and for air intake and delivery.

Installation height: 2,8 - 4,6 m.

FIXING:

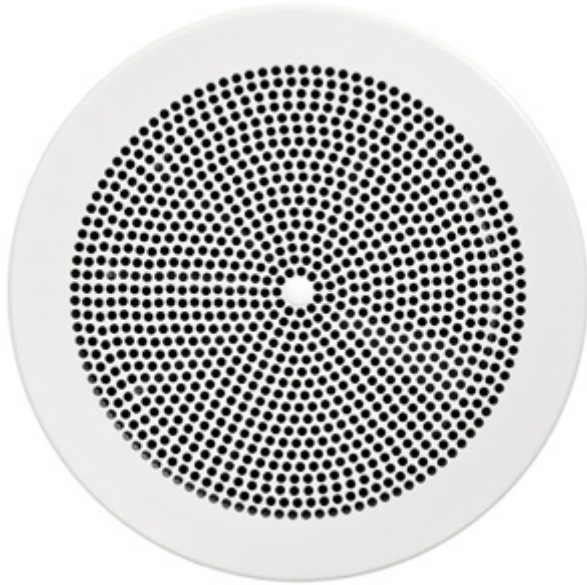
Fixing by screws on neck diffuser.

ACCESSORIES:

- Galvanized steel connecting plenum with insulation and calibration damper.
-

DVSE-S

Fixed geometry circular diffuser with helical effect and circular perforated plate



CHARACTERISTICS:

Fixed geometry circular diffuser with helical effect and perforated plate.

CONSTRUCTION:

RAL 9010 white painted steel.

UTILIZATION:

Ceiling installation for air supply or return.

Installation height: 2,8 - 3,2 m.

FIXING:

Fixing by screws on neck diffuser.

ACCESSORIES:

- Galvanized steel connecting plenum with insulation and calibration damper.
-

DL-50

Linear slot diffusers with aifoil section rotating deflector for high airflow.



CHARACTERISTICS:

Linear slot diffusers with aifoil section rotating deflector for high airflow.

CONSTRUCTION:

Anodized extruded aluminium, deflector made of RAL 9005 black polypropylene.

UTILIZATION:

For ceiling installation and for air intake and delivery.

Installation height: 2,6 - 4,0 m.

FIXING:

- By frontal screws.
- By inner mounting mobile bracket.
- By springs inside the plenum.

ACCESSORIES:

- Galvanized steel connecting plenum with insulation.
 - Deflector RAL 9003.
-

DL-35

Linear slot diffusers with aifoil section rotating deflector for medium-small ai



CHARACTERISTICS:

Linear slot diffusers with aifoil section rotating deflector for medium-small airflow.

CONSTRUCTION:

Anodized extruded aluminium, deflector made of RAL 9005 black polypropylene.

UTILIZATION:

For ceiling installation and for air intake and delivery.

Installation height: 2,6 - 4,0 m.

FIXING:

- By frontal screws.
- By inner mounting mobile bracket.
- By springs inside the plenum.

ACCESSORIES:

- Galvanized steel connecting plenum with insulation.
 - Deflector RAL 9003.
-

Round duct diffusers

**CHARACTERISTICS:**

Round duct diffusers with adjustable deflectors.

CONSTRUCTION:

Galvanized or painted steel sheet or stainless steel. Deflection blades are made of polypropylene

UTILIZATION:

Ceiling supply

Installation height: 3,0 - 10,0 m

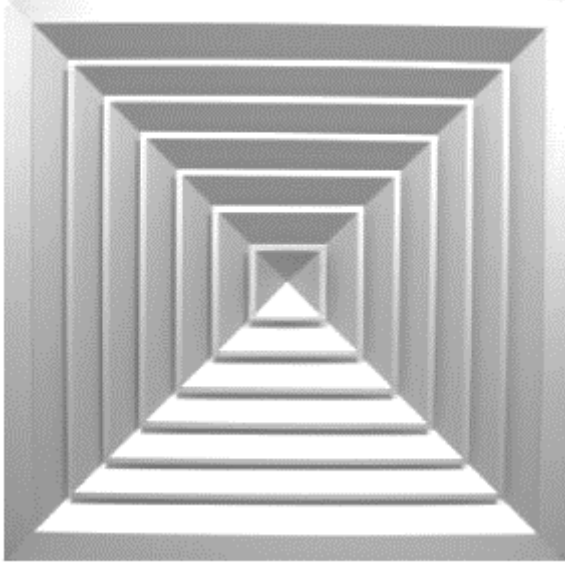
FIXING:

Installation like spiro ducts together with connectors for joining more diffusers into a line.

ACCESSORIES:

Connectors, bends, end caps.

Multi-directional 4-way diffusers with removable central part. ANODIZED.



CHARACTERISTICS:

Multi-directional 4-way diffusers with removable central part.

CONSTRUCTION:

Anodized aluminium.

UTILIZATION:

For ceiling installation and for air intake and delivery.

Installation height: 2,5 - 3,1 m.

FIXING:

By using screws on the diffuser neck.

ACCESSORIES:

- Galvanized steel plenum, standard or insulated, with or without equalizer sheet.
 - Calibration damper made of galvanized steel and fins with opposite movement.
-

AQN

Multi-directional 4-way diffusers with removable central part.



CHARACTERISTICS:

Multi-directional 4-way diffusers with removable central part.

CONSTRUCTION:

Aluminium powder coated white RAL 9010.

UTILIZATION:

For ceiling installation and for air intake and delivery.

Installation height: 2,5 - 3,1 m.

FIXING:

By using screws on the diffuser neck.

ACCESSORIES:

- Galvanized steel plenum, standard or insulated, with or without equalizer sheet.
 - Calibration damper made of galvanized steel and fins with opposite movement.
-

RST

Multi-directional 4-way diffusers with removable central part. ANODIZED.



CHARACTERISTICS:

Curved blades air diffusers with 1, 2, 3 or 4 throw directions.

CONSTRUCTION:

Anodized aluminium.

UTILIZATION:

For ceiling installation and for air delivery.

Installation height: 2,4 - 3,2 m.

FIXING:

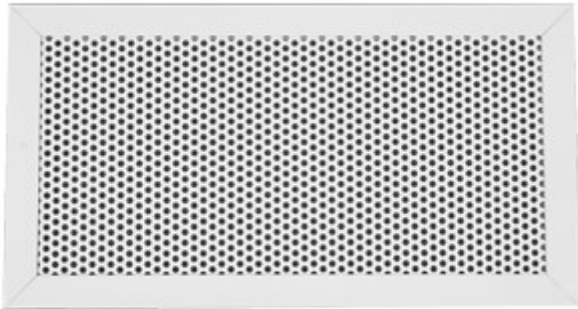
Fixing by using frontal screws or by clips.

ACCESSORIES:

- Galvanized steel plenum, standard or insulated, with or without equalizer sheet.
 - Calibration damper made of galvanized steel and fins with opposite movement.
-

BQF

Perforated face return grilles.



CHARACTERISTICS:

Perforated face return grilles.

CONSTRUCTION:

Frame made of RAL 9010 white painted aluminium. Panel made of RAL 9010 white painted steel.

UTILIZATION:

For wall installation and for air intake.

FIXING:

- Fixing by using clips or frontal screws on demand.

ACCESSORIES:

- Galvanized steel plenum, standard or insulated.
 - Calibration damper made of galvanized steel and fins with opposite movement.
 - Mounting counterframes made of galvanized steel sheet.
-

Swirl diffusers.



CHARACTERISTICS:

Swirl diffusers.

CONSTRUCTION:

RAL 9010 white painted steel.

UTILIZATION:

For ceiling installation and for air intake and delivery.

Installation height: BQS = 2,6 - 4,0 m.

FIXING:

Fixing by using lateral screws or central screw on mounting bridge.

ACCESSORIES:

- Galvanized steel plenum, standard or insulated, with or without equalizer sheet, calibration damper and mounting bridge.
-

Swirl diffusers.



CHARACTERISTICS:

Swirl diffusers.

CONSTRUCTION:

RAL 9010 white painted steel.

UTILIZATION:

For ceiling installation and for air intake and delivery.

Installation height: BQSN = 2,7 - 3,6 m.

FIXING:

Fixing by using lateral screws or central screw on mounting bridge.

ACCESSORIES:

- Galvanized steel plenum, standard or insulated, with or without equalizer sheet, calibration damper and mounting bridge.
-

DOE

Circular diffusers with fixed cones and removable core and butterfly damper.



CHARACTERISTICS:

Circular diffusers with fixed cones and removable core and butterfly damper.

CONSTRUCTION:

White RAL 9016 painted aluminium and airtight seal.

UTILIZATION:

For ceiling installation and for air intake and delivery.

Installation height: 2,6 - 4,1 m.

FIXING:

Fixing by concealed fixing screws mounted on the diffuser neck or with mounting bridge.

ACCESSORIES:

Fixing ring.

DOT

Circular diffusers with adjustable cones.



CHARACTERISTICS:

Circular diffusers with adjustable cones.

CONSTRUCTION:

Bell in aluminium white RAL 9010 adjustable cones in steel white RAL 9010.

UTILIZATION:

For ceiling installation and for air intake and delivery.

Installation height: 2,7 - 3,5 m.

FIXING:

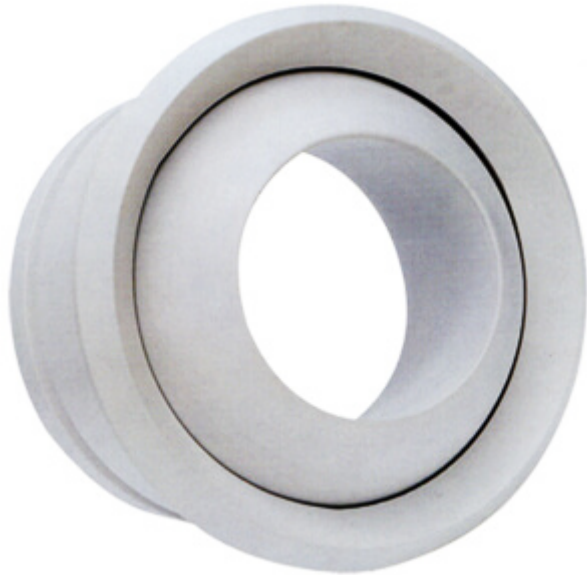
Fixing by concealed fixing screws mounted on the diffuser neck.

ACCESSORIES:

- Galvanized steel connecting plenum.
 - Butterfly damper (SF) with central screw adjustment through the centre of the diffuser.
 - Equalizer (EQ).
-

UD

Jet diffusers for long throw with orientable nozzle for a maximum angle of 30°.



CHARACTERISTICS:

Jet diffusers for long throw with orientable nozzle for a maximum angle of 30°.

CONSTRUCTION:

Aluminium alloy painted white RAL 9010 on the front with special gasket seal between the spherical element and the outer frame.

UTILIZATION:

For ceiling or wall installation for air delivery

Installation height: 2,4 - 11,5 m.

FIXING:

Fixing by means of hidden screws on the front once removed the visible part.

EAV-CR: exhaust valves in steel with mounting ring. EAV-CM: Supply valves in st



CHARACTERISTICS:

EAV-CR: exhaust valves in steel with mounting ring.

EAV-CM: Supply valves in steel with mounting ring.

CONSTRUCTION:

RAL 9010 white painted steel with fixing ring.

UTILIZATION:

For ceiling installation and for air intake.

Installation height: 2,5 - 3,0 m.

